

Drain: MORROW - FOLLETT Drain #: 128
Improvement/Arm: 1950 RECONSTRUCTION
Operator: J. LIVINGSTON Date: 7-14-04
Drain Classification: Urban/Rural Year Installed: 1950

GIS Drain Input Checklist

- Pull Source Documents for Scanning
- Digitize & Attribute Tile Drains
- Digitize & Attribute Storm Drains
- Digitize & Attribute SSD
- Digitize & Attribute Open Ditch
- Stamp Plans
- Sum drain lengths & Validate
- Enter Improvements into Posse
- Enter Drain Age into Posse
- Sum drain length for Watershed in Posse
- Check Database entries for errors

JL
JL
JL
JL
JL
JL
JL
JL
JL
JL
JL
JL

**Gasb 34 Footages for Historical Cost
Drain Length Log**

Drain-Improvement: MUKROW - FOLLETT - 1950 RECONSTRUCTION

Drain Type:	Size:	Length	Length (DB Query)	Length Reconcile	If Applicable	
					Price:	Cost:
DEPOT ARM- CONC. TILE	24"	700'	661'	-39'	11.00/ft	7271.00
CARMEL SEWER ARM - CONC TILE	N/A	950'	720'	-230'	N/A	N/A
DONAHUE ARM- CONC. TILE	12"	280'	318'	+38'	4.00/ft	1272.00

Sum: 1930' 1699' *-231' \$8,543.00

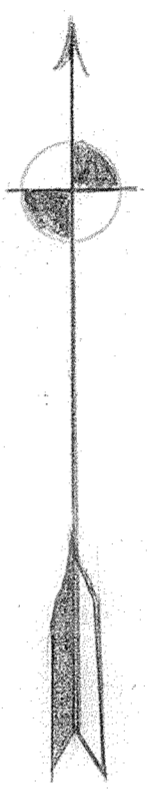
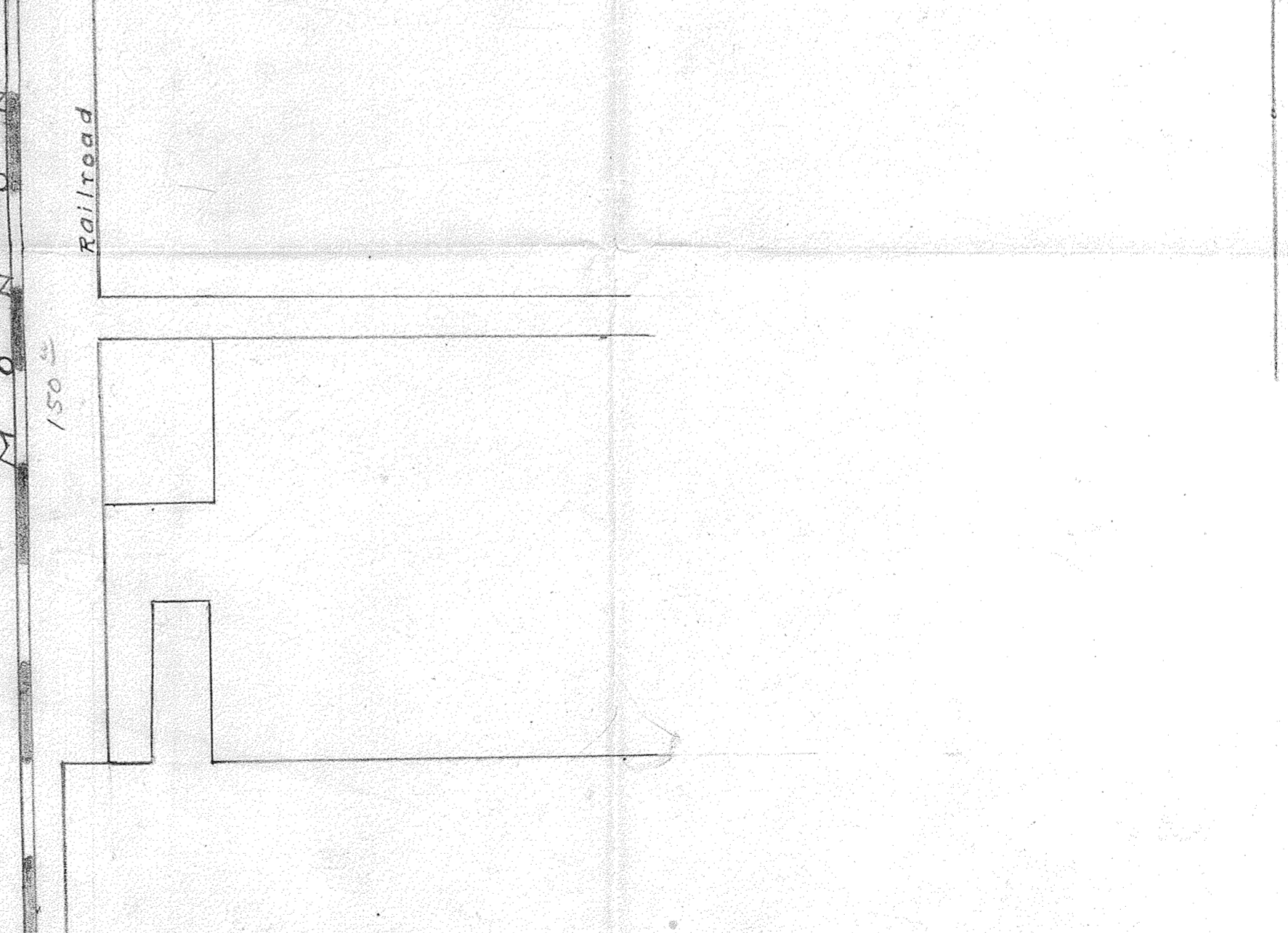
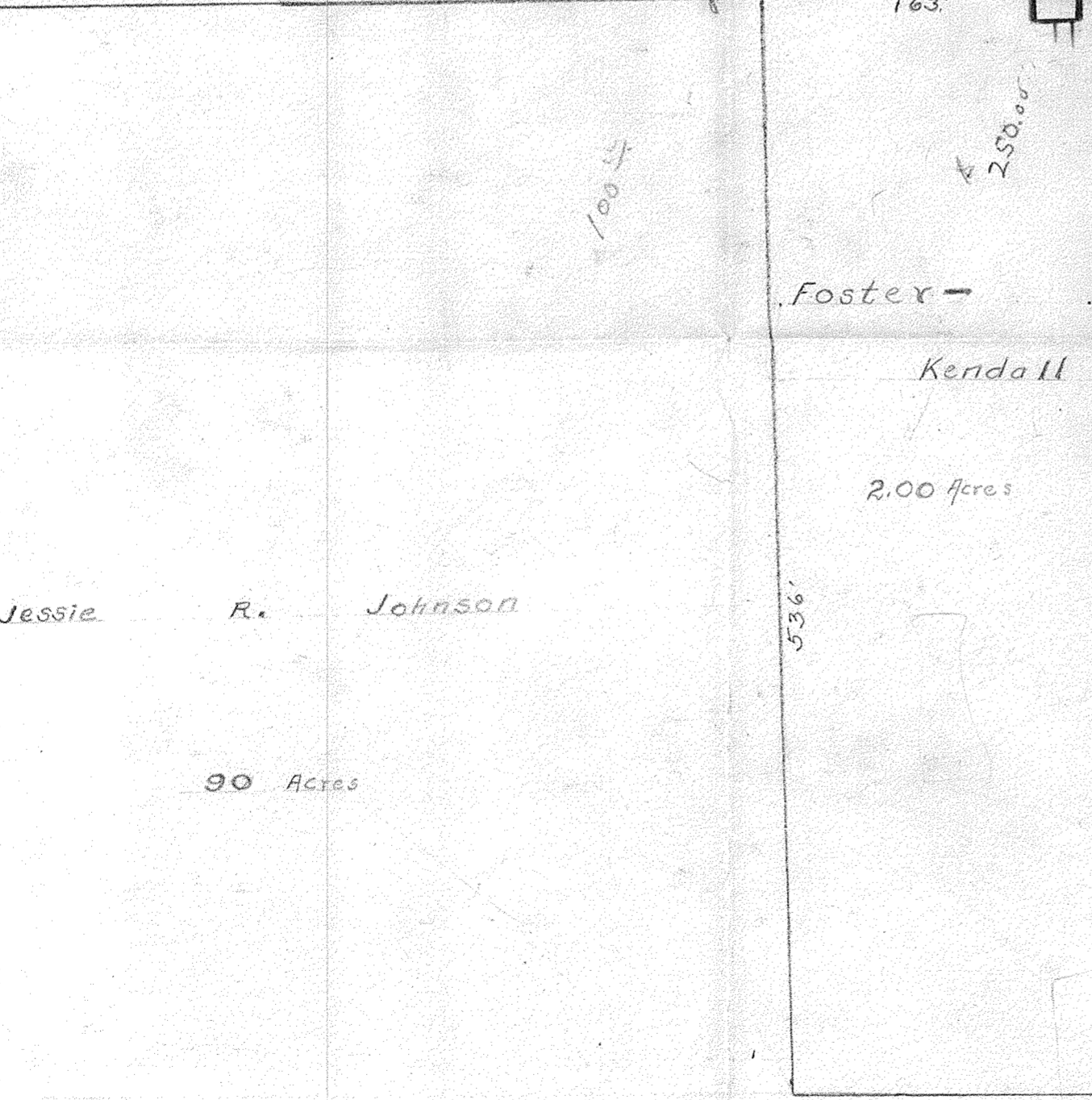
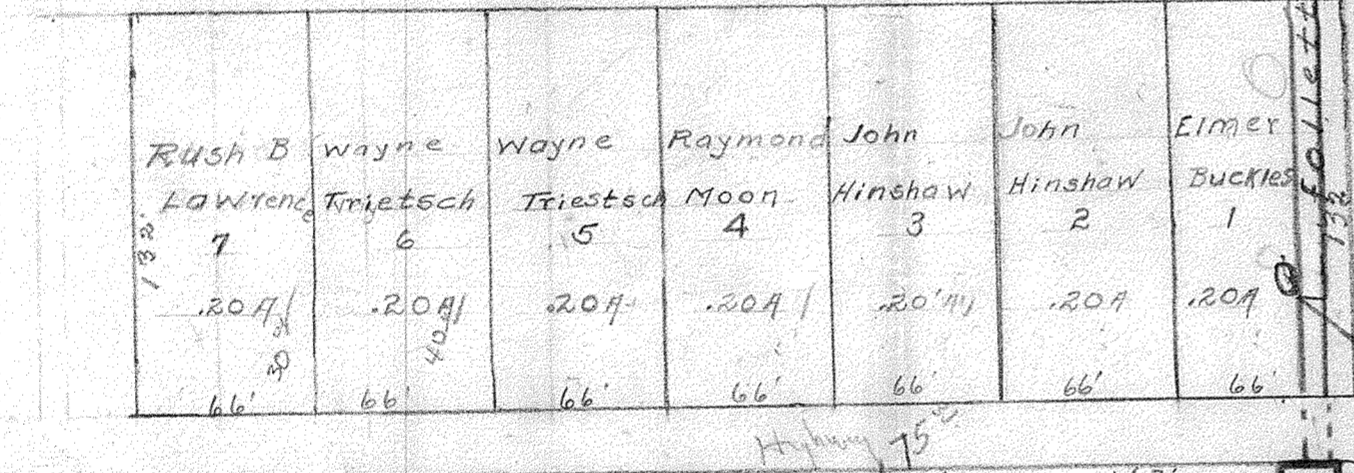
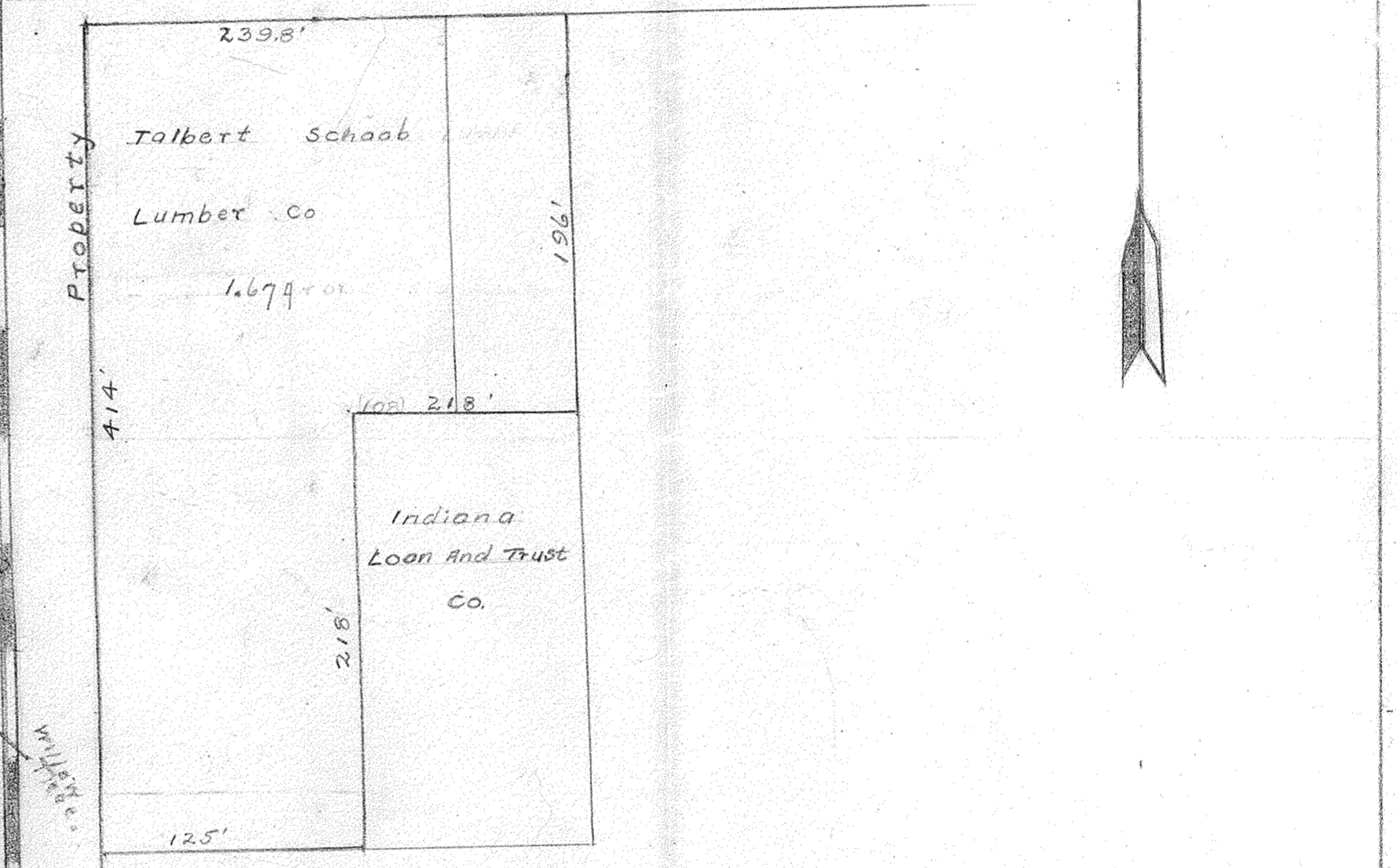
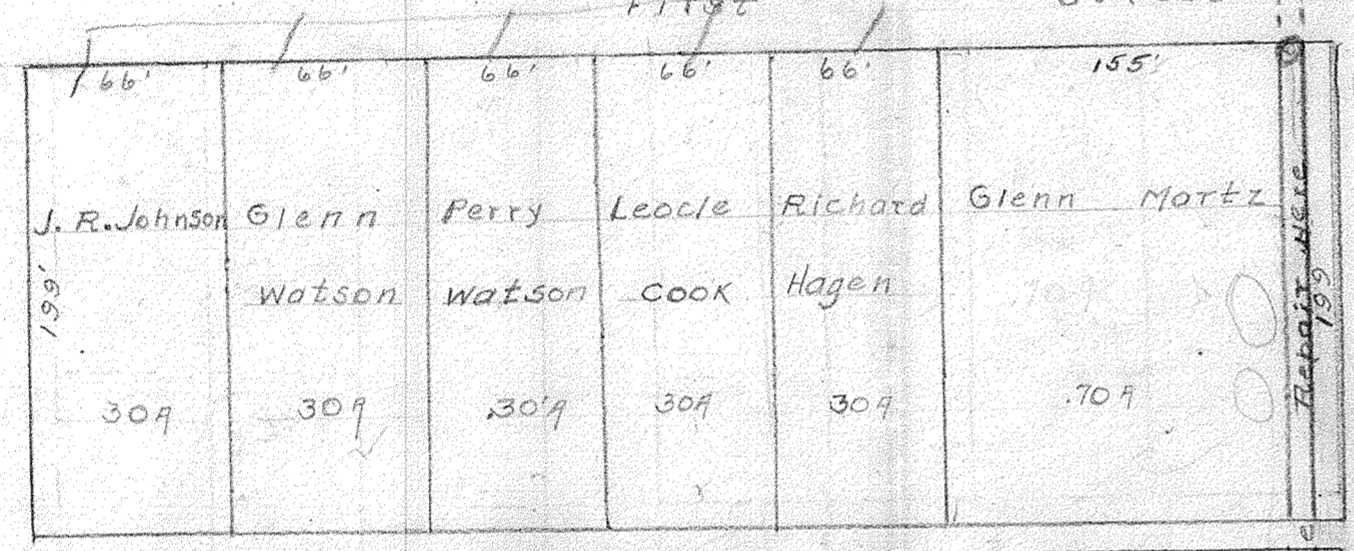
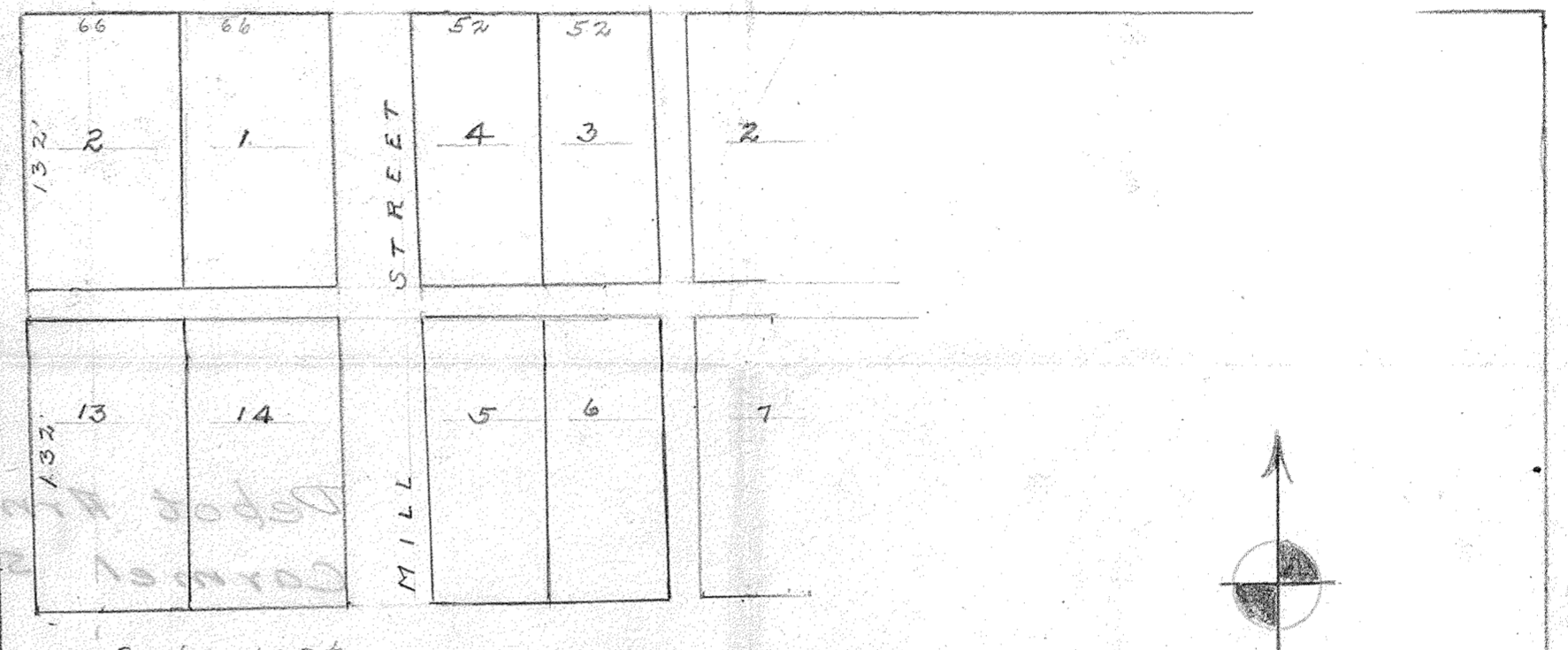
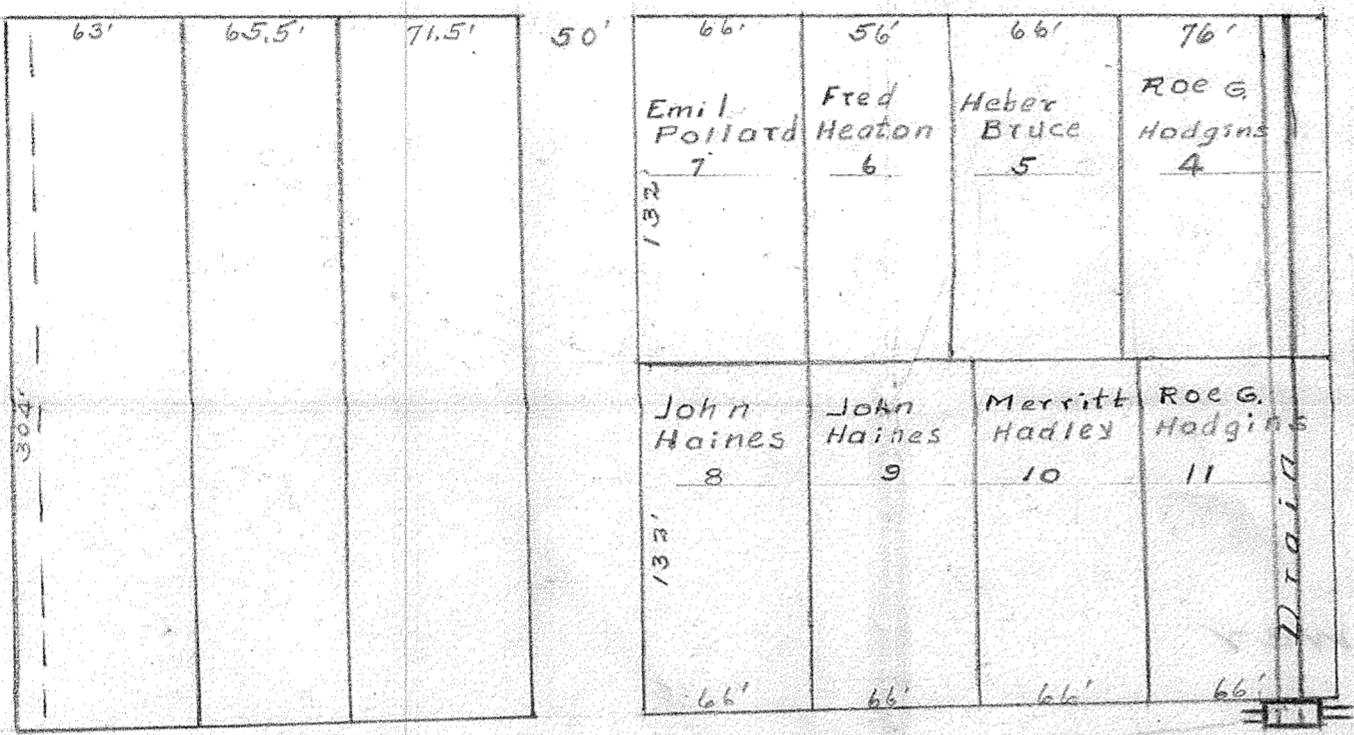
Final Report: _____

Comments:

* 230' OF THE CARMEL SEWER ARM RELOCATED
 THE OTHER LENGTHS WERE VERIFIED IN THE FIELD AND CONTRAICT
 THE LENGTHS GIVEN IN THE SURVEYOR'S REPORT DATED 6-5-1995.

431

S T A T E H I G H W A Y # 237



Fred W. Johnson
19.10 Acres

FOLLETT DRAIN
DEPOT ARM
CARMEL IND.
RD HORNEY REG. ENG.
AUG. 31 1950